



SPACE DETAILS:

6,800 SF
Full Building Available

LOCATION:

Journal Square CBD
Between Magnolia Ave and Sip Ave
Directly across from the JSQ PATH

FRONTAGE:

40 FT on Summit Ave

LIQUOR LICENSE:

Available For Purchase

CURRENT BUILDOUT:

Lower Level: Small Kitchen, Storage, Bar, Fireplace, Utilities Rooms, ADA Entrance, Bathrooms

First Floor: Kitchen, Bar, Dining Area, Fireplace

Second Floor: Party Room, Dining Area, Storage, Bathrooms, Waiters Staircase Connecting 1st Floor - 3rd Floor

Third Floor: Office and Storage Area

POSSESSION:

June 2025

TRAFFIC COUNT:

17,020 VPD

DELIVERY:

Negotiable

LEASE TYPE:

NNN

ASKING RENT:

Upon Request

HIGHLIGHTS:

6,800 SF second generation restaurant space for lease.

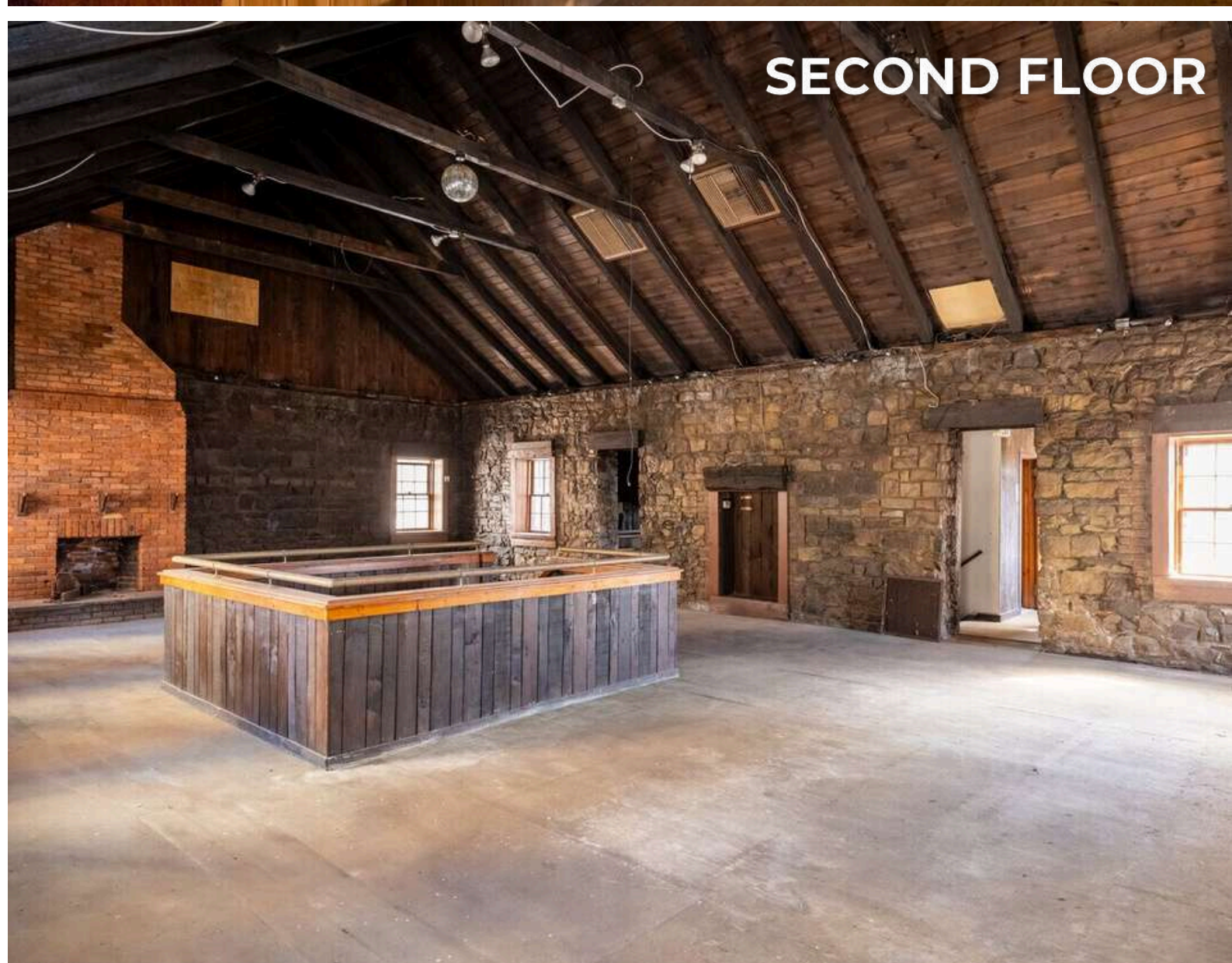
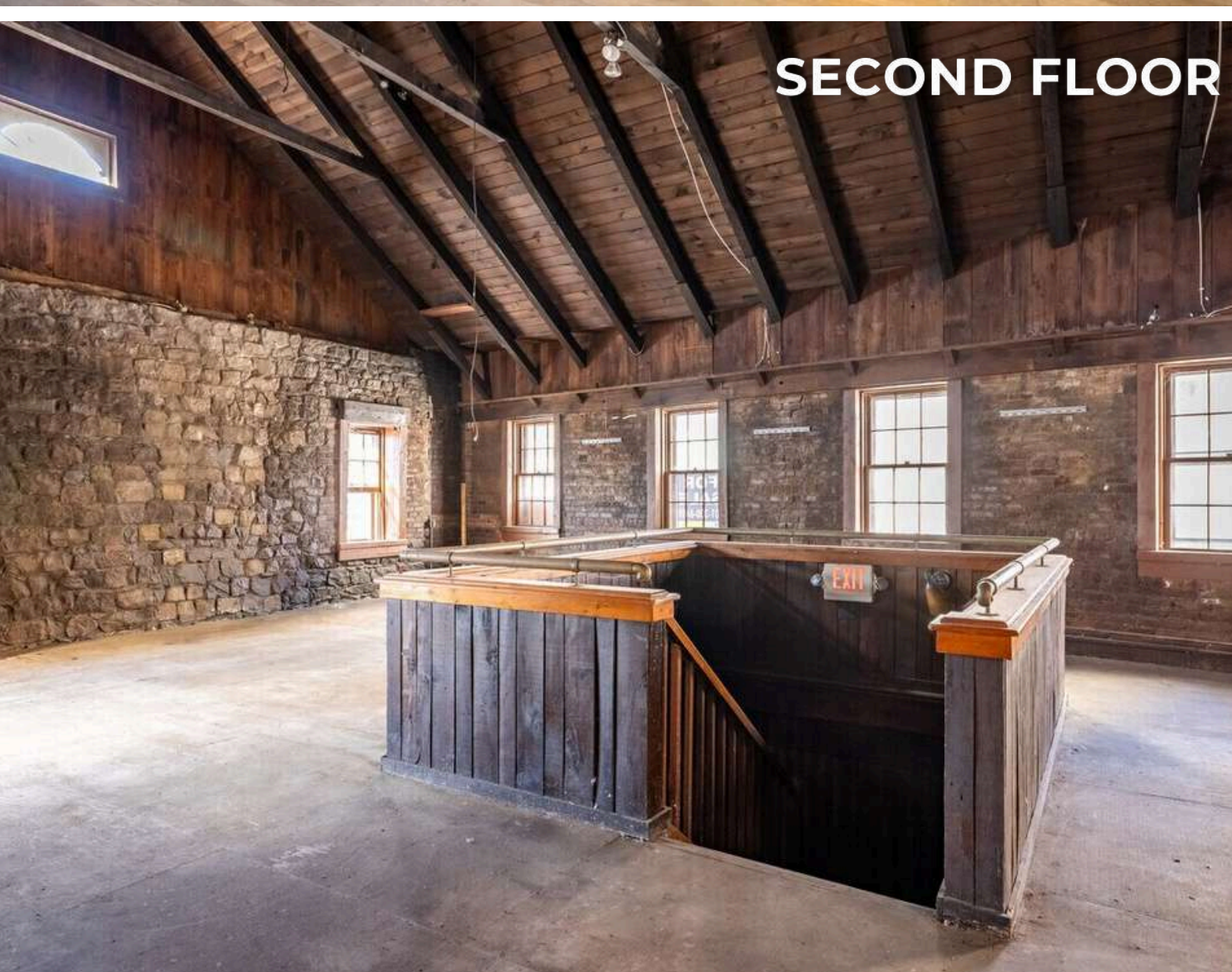
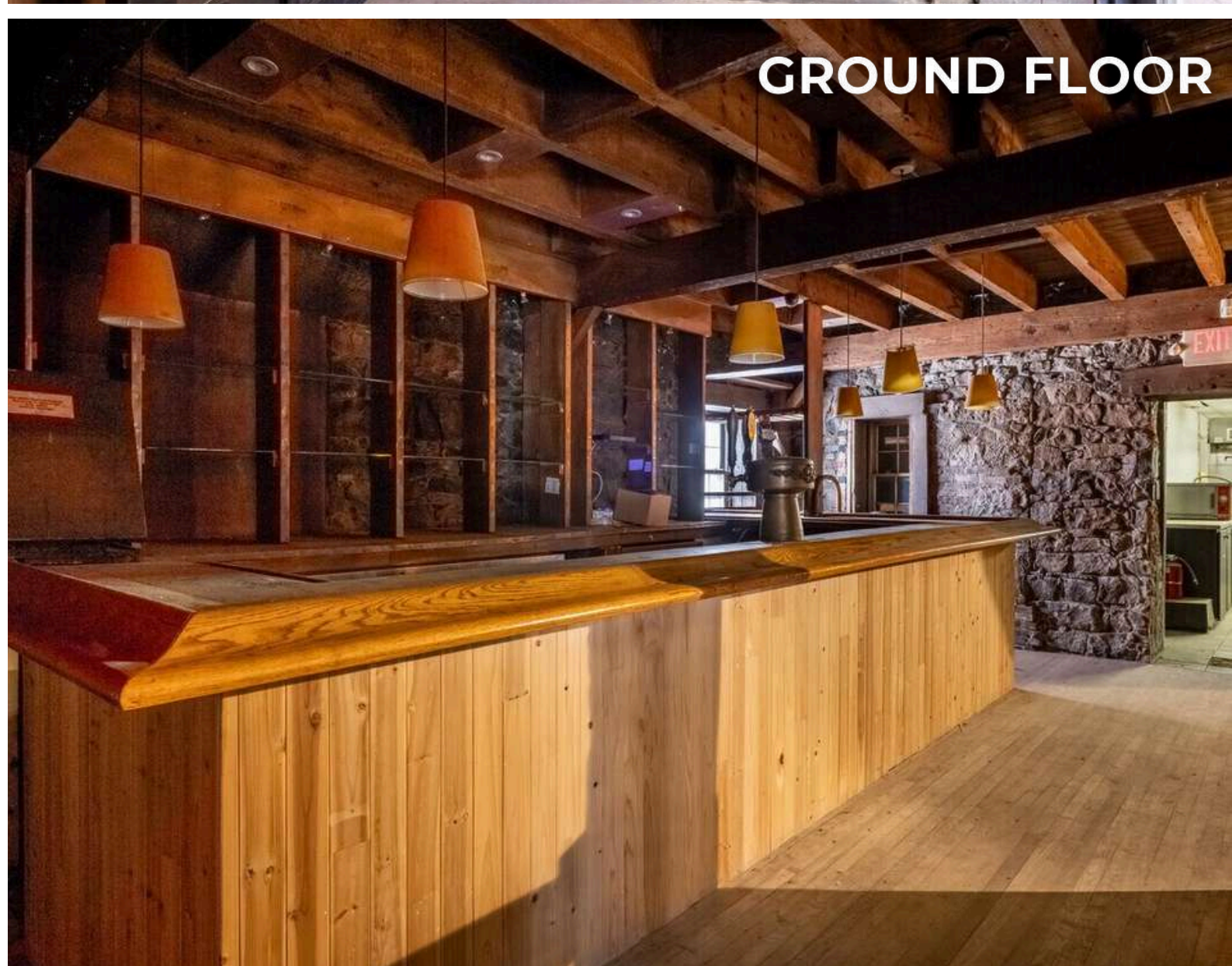
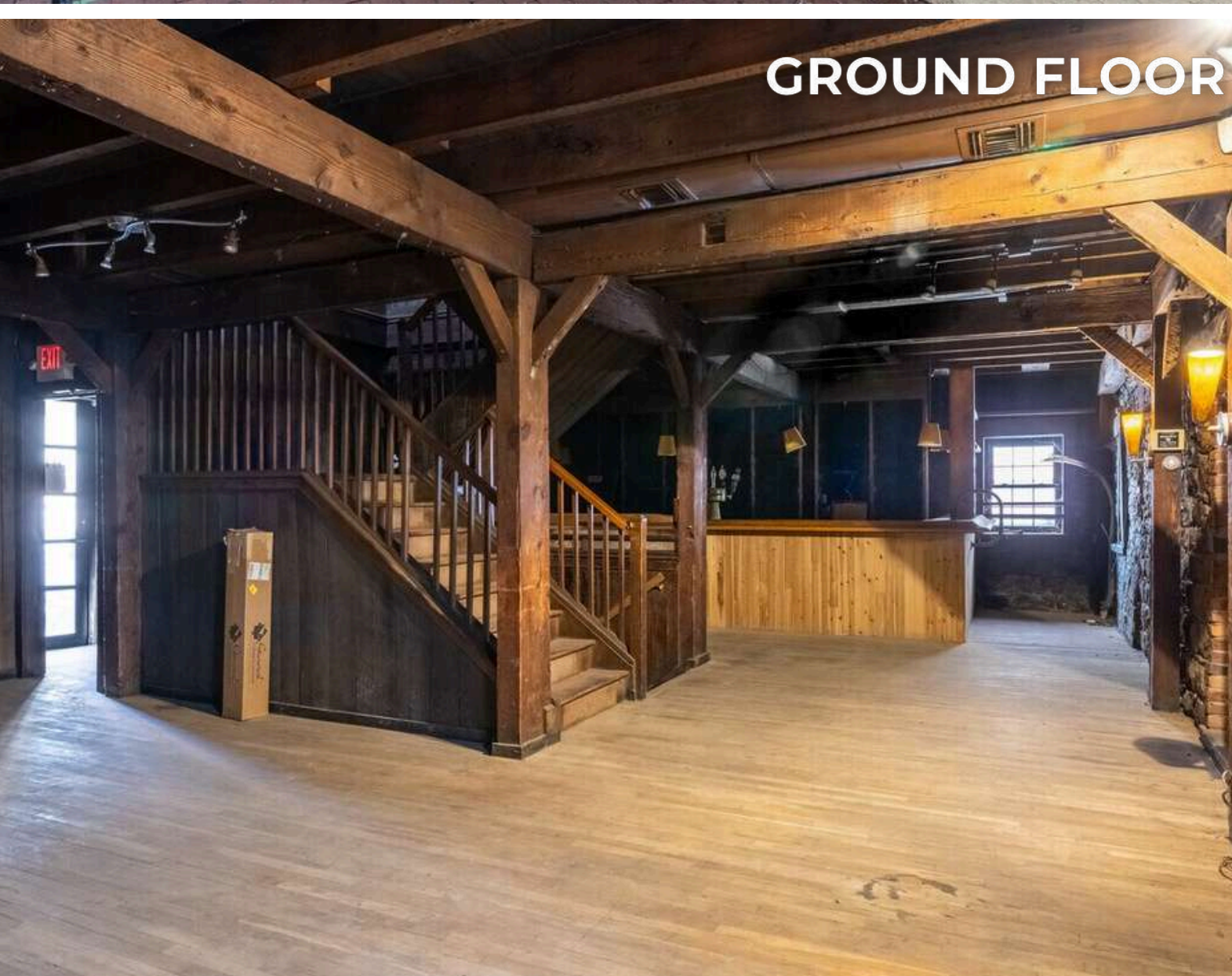
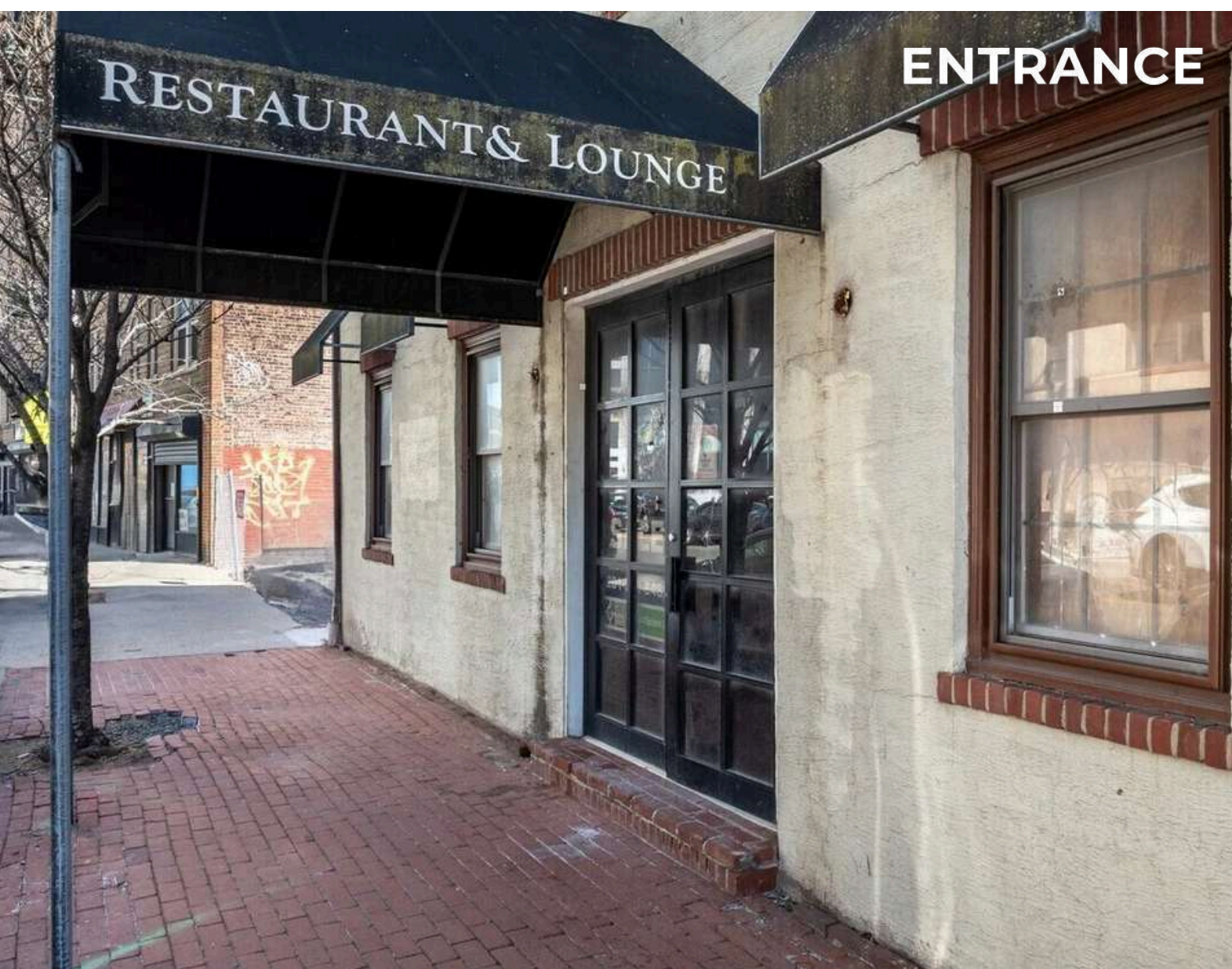
Little to no sit down restaurants in and around the Journal Square PATH. Endless Possibilities!

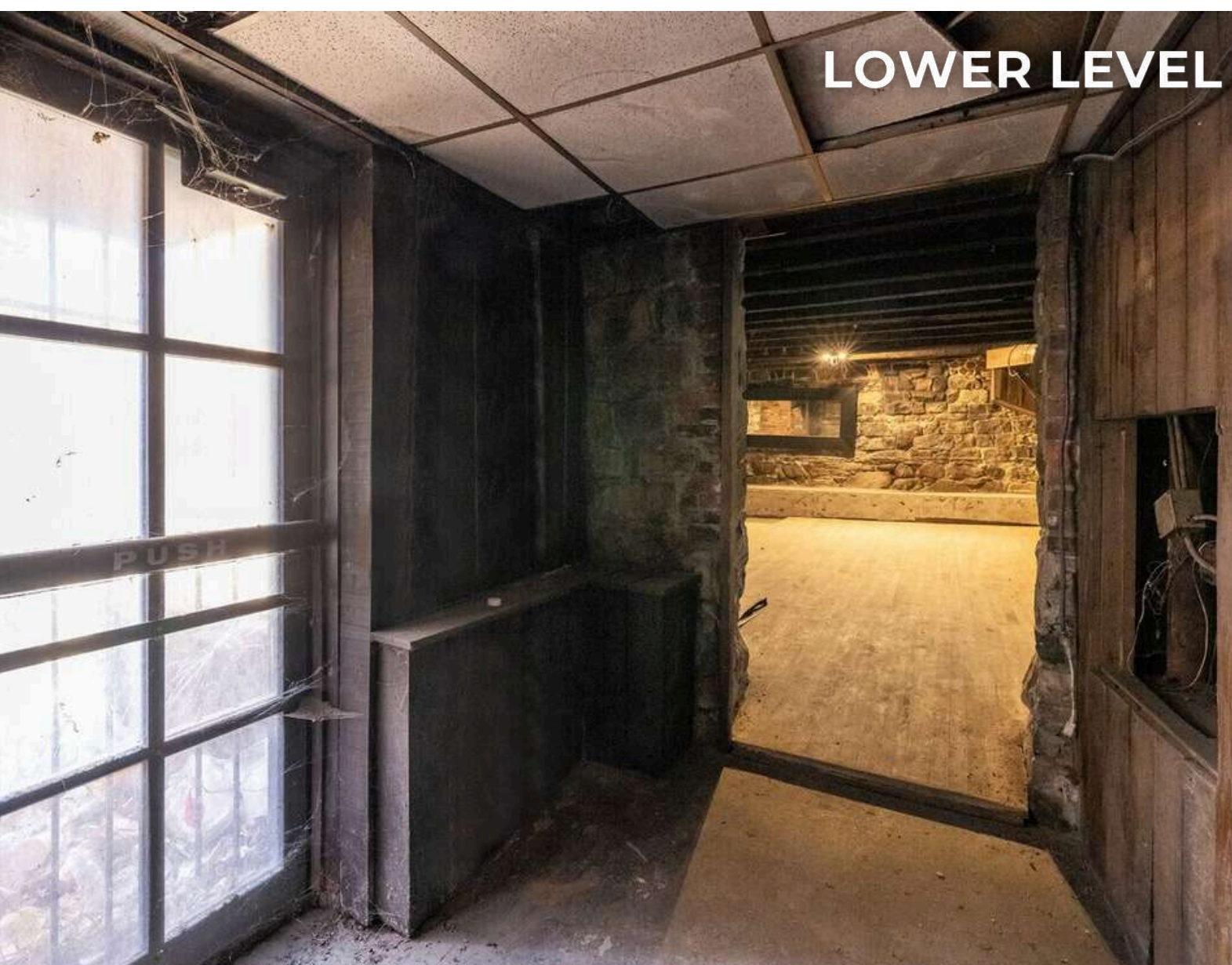
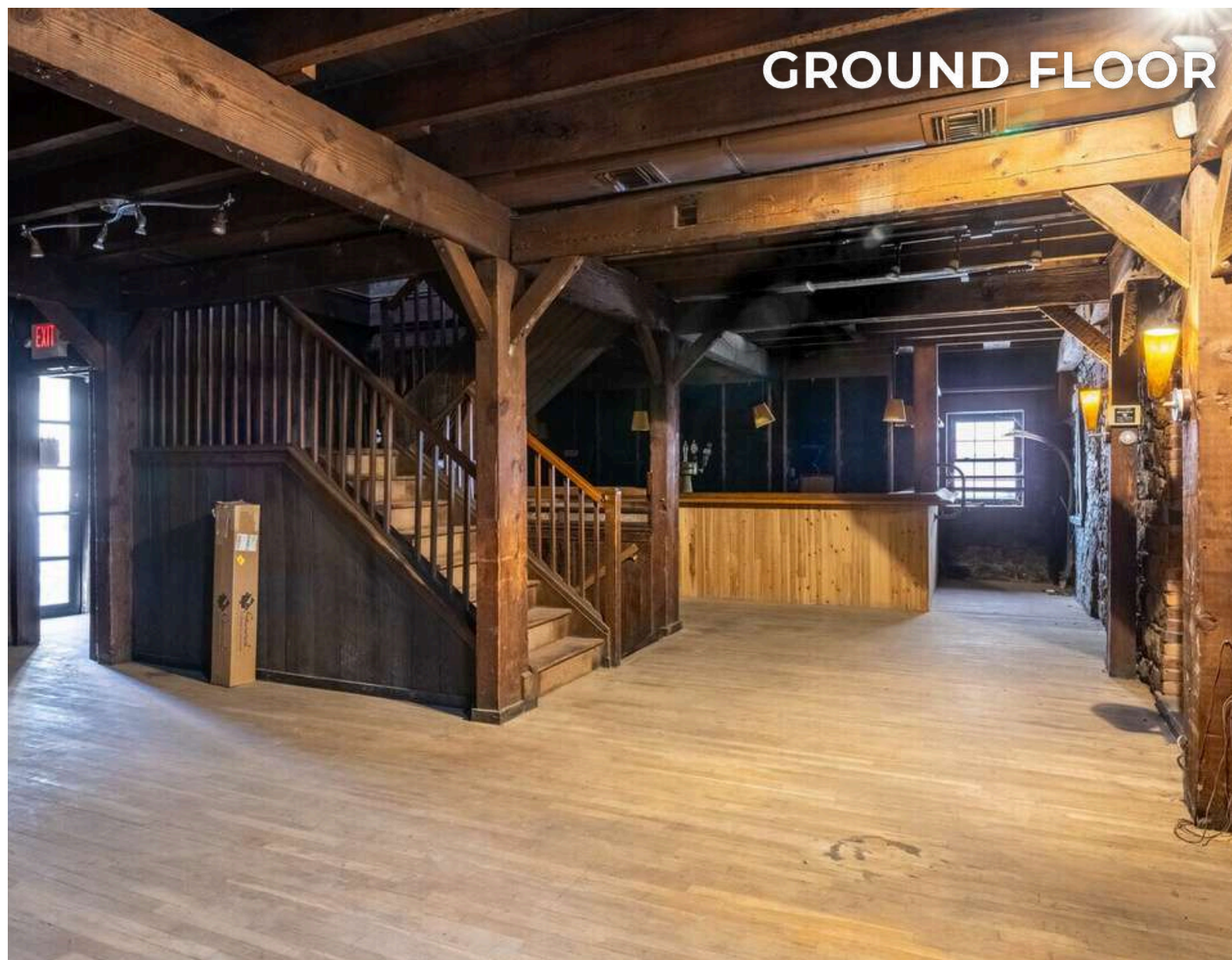
510 Summit is positioned in the heart of Jersey City's bustling Journal Square neighborhood steps from the Journal Square PATH Station.

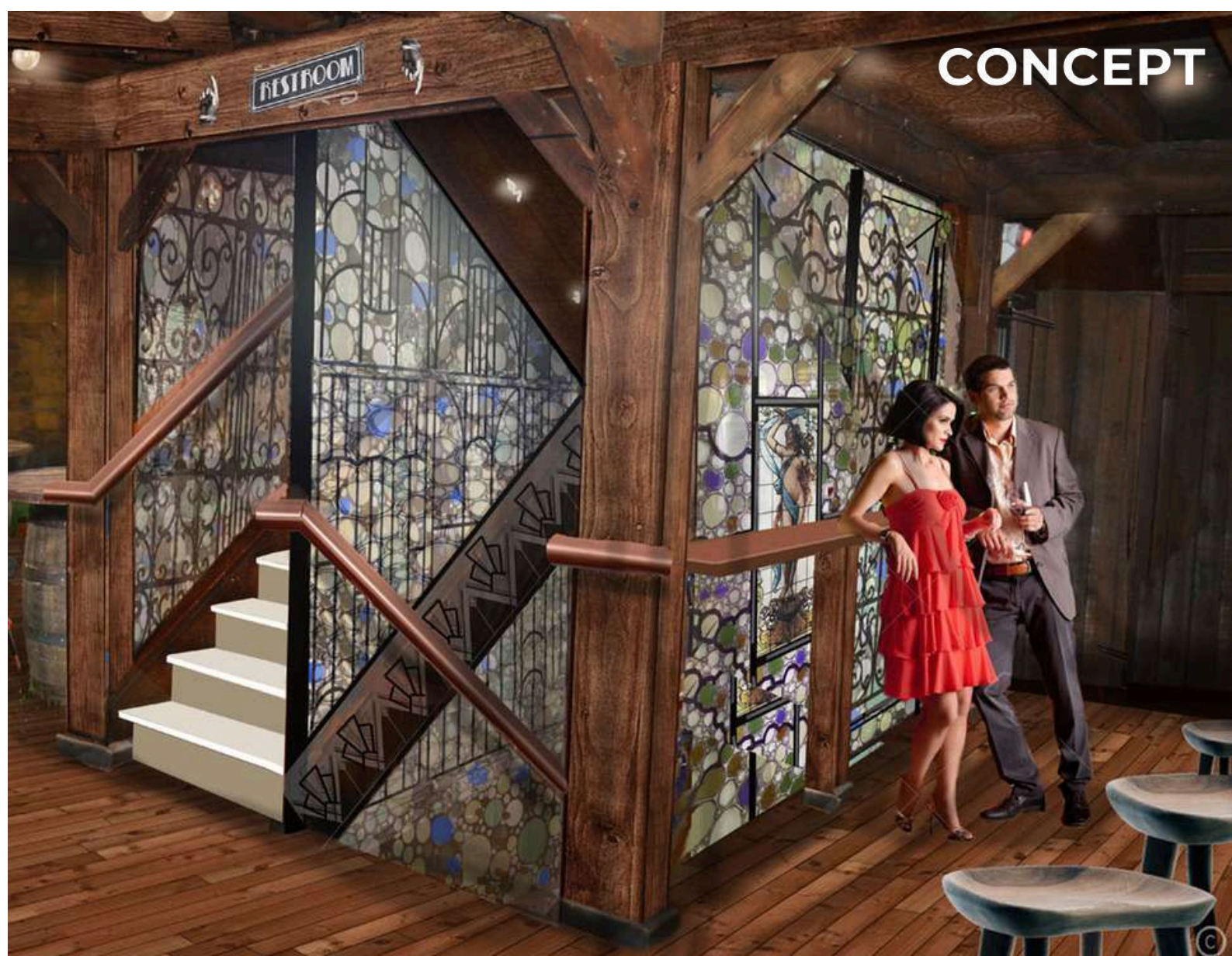
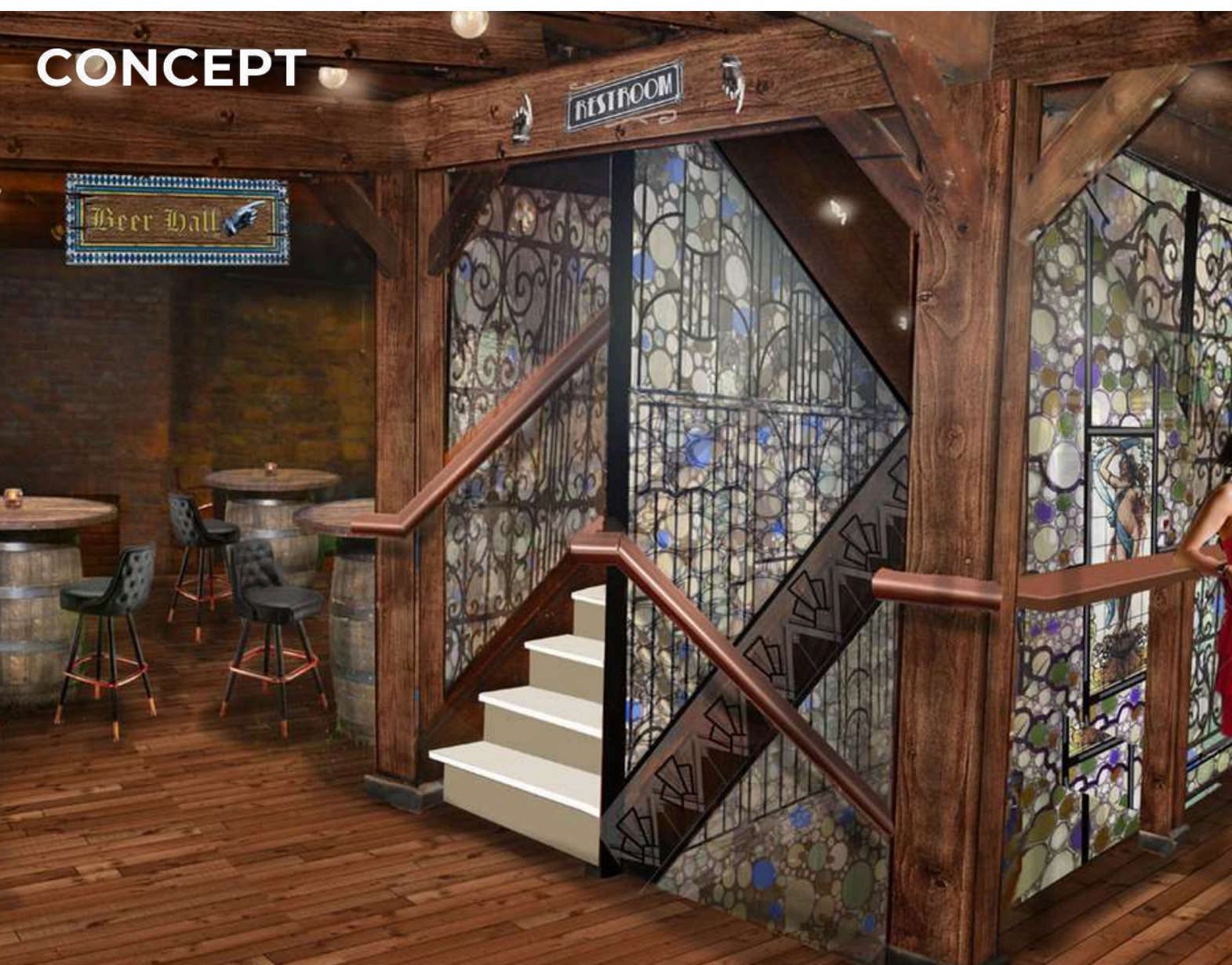
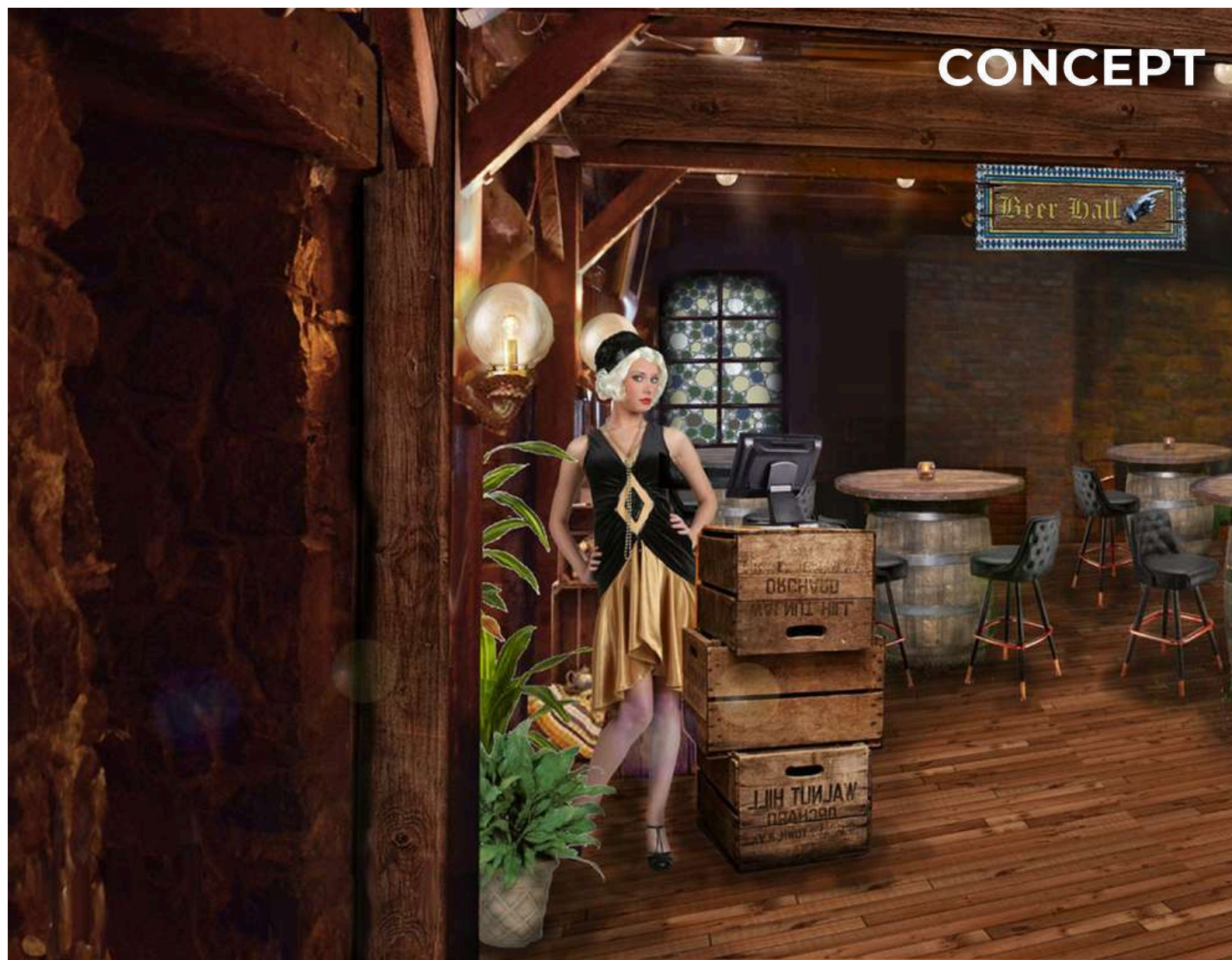
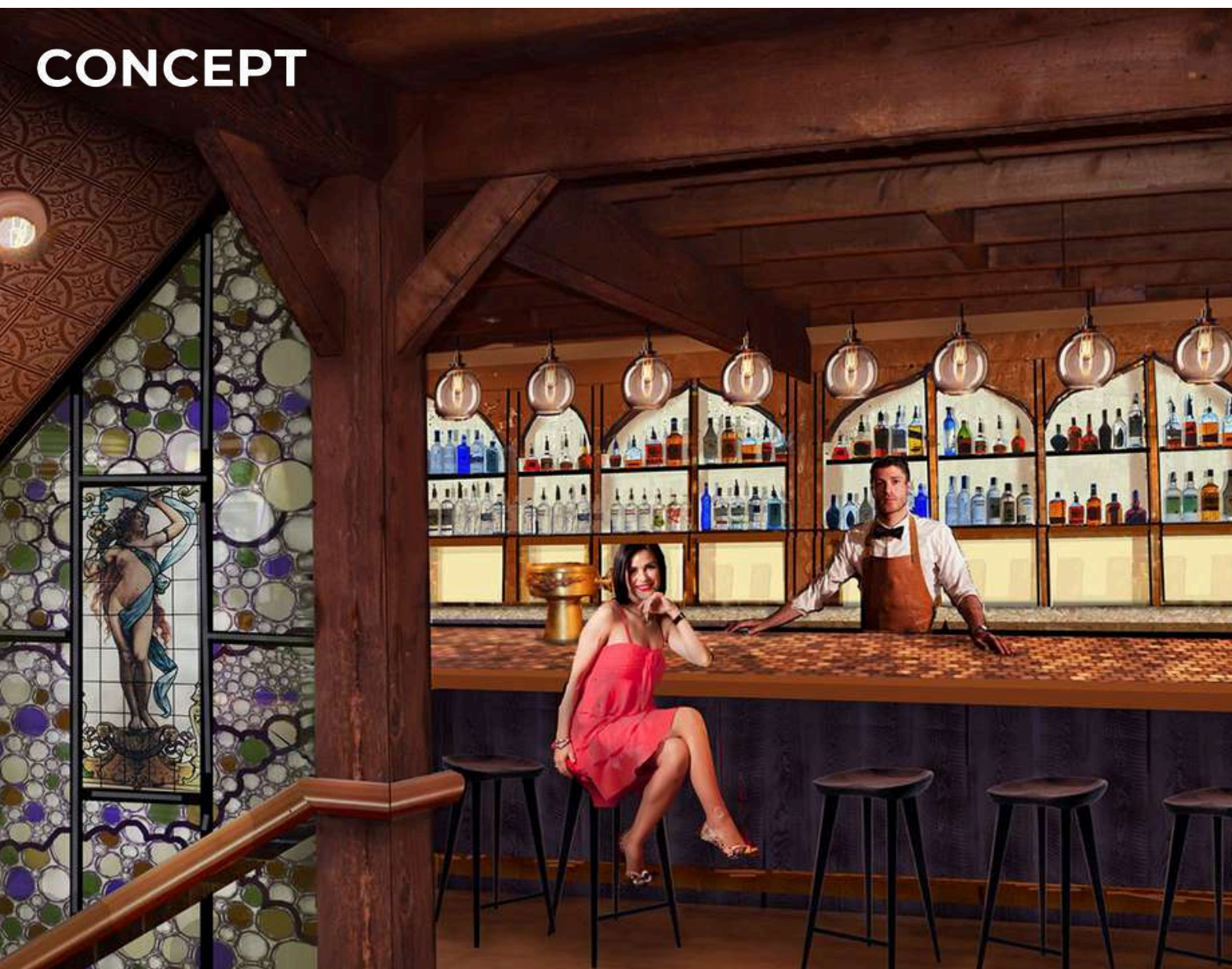
Surrounded by multiple brand new high-rise developments all with an array of upscale residences, trendy retail spaces, and vibrant communal areas making Journal Square the place to be for those who crave the pulse of city living.

Located across from 5,000 newly constructed apartment units.

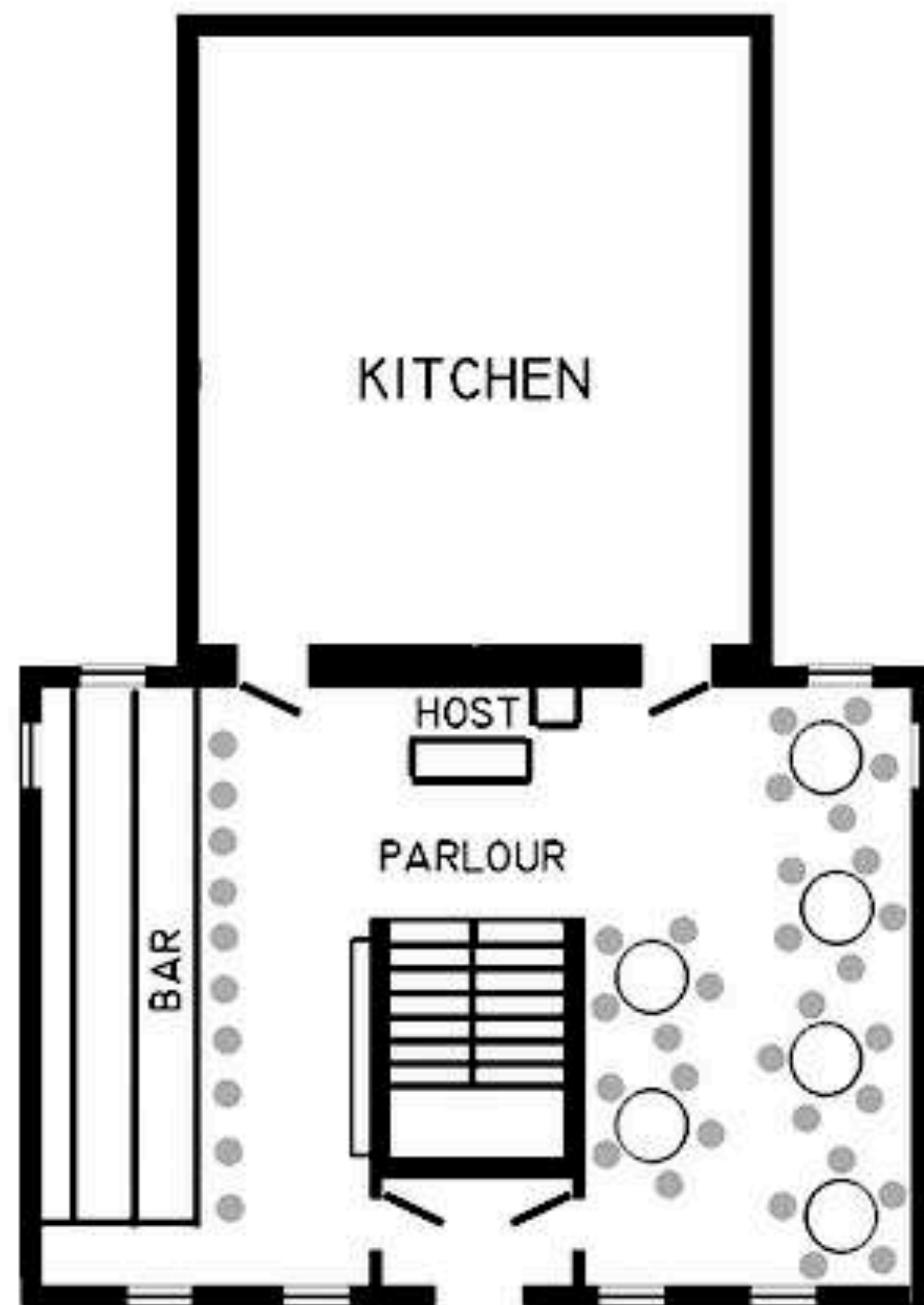
Unbelievable visibility on Summit Ave.



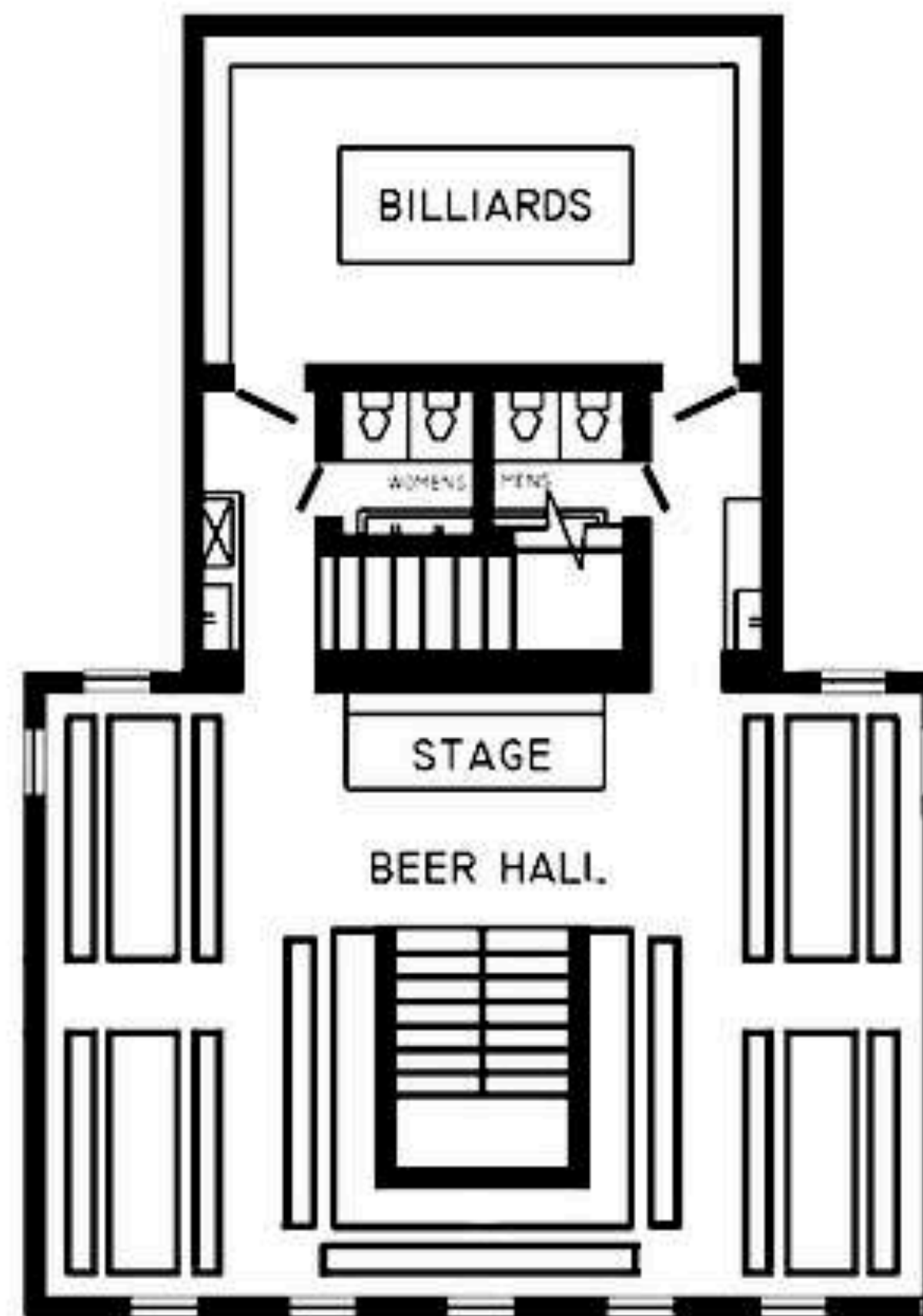




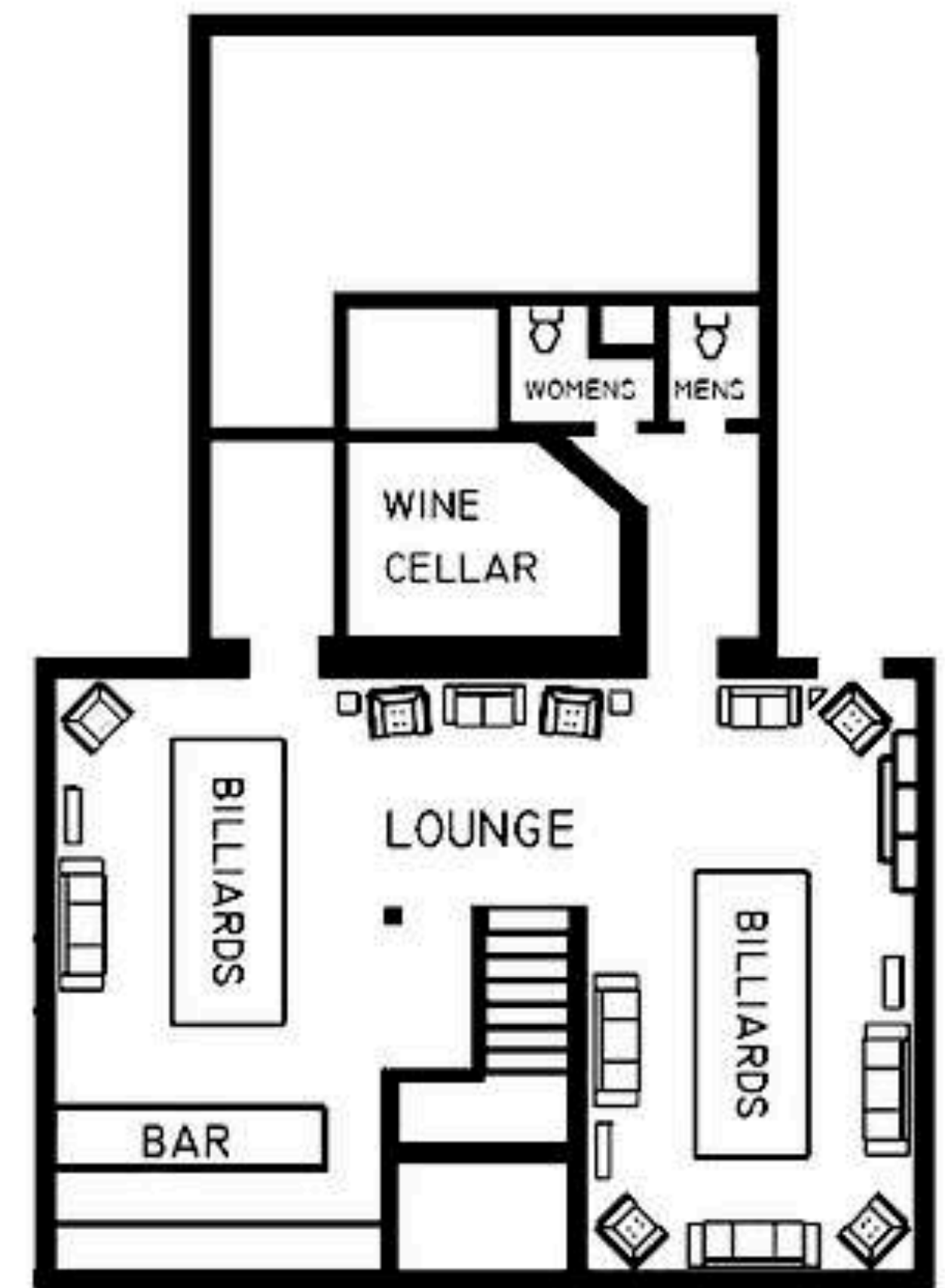
CONCEPT FLOOR PLAN



FIRST LEVEL
PARLOUR

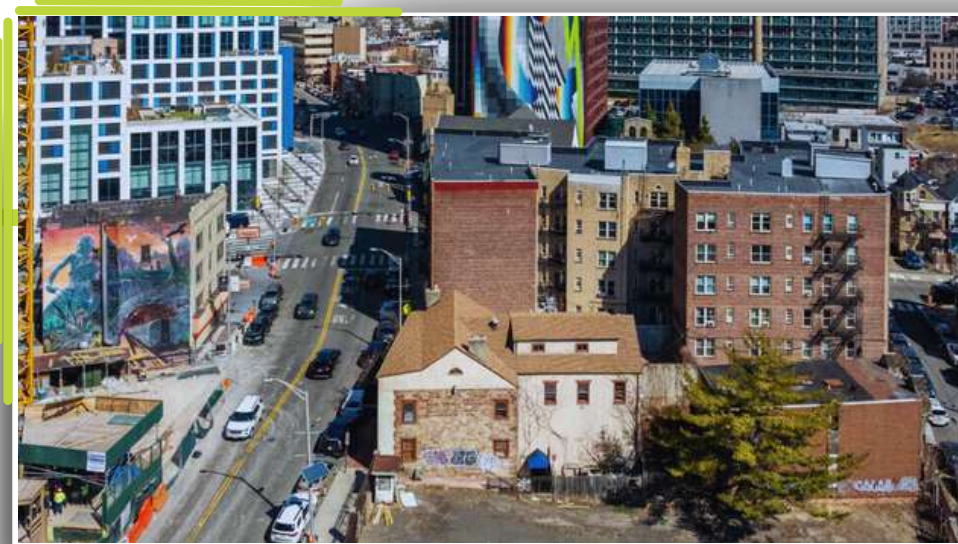


SECOND LEVEL
BEER HALL



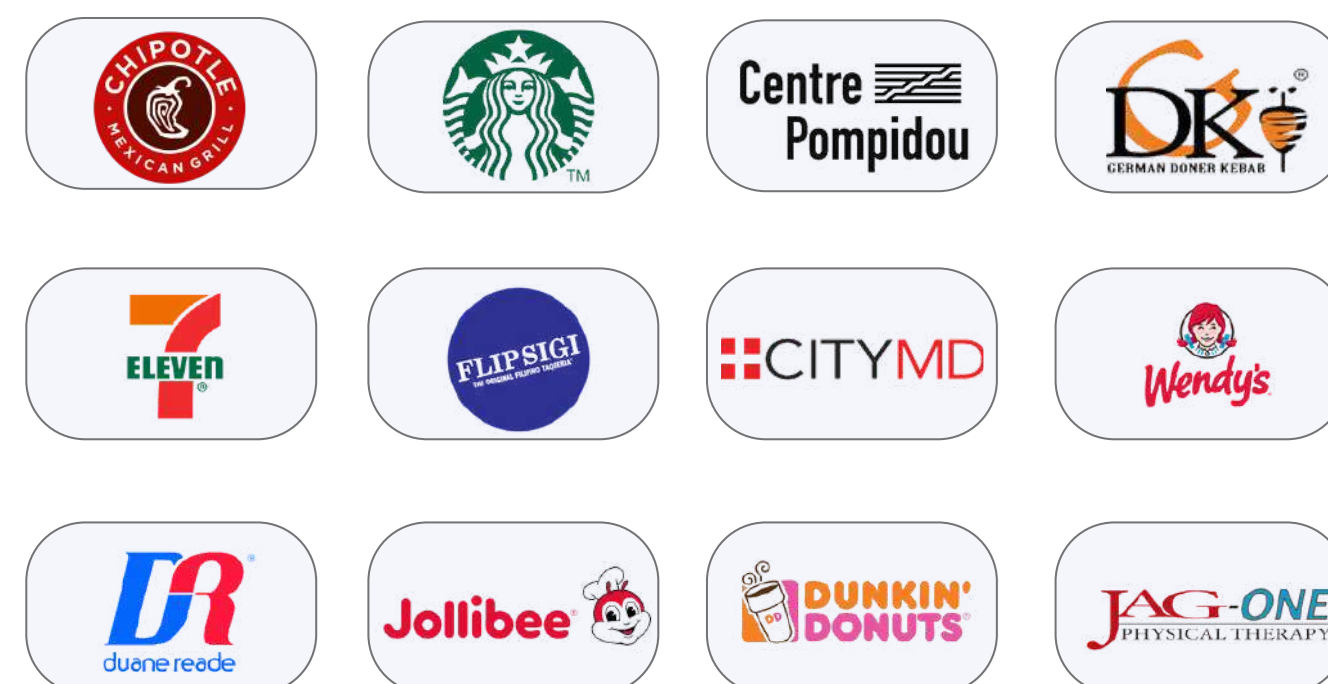
BASEMENT LEVEL
LOUNGE

510 SUMMIT AVENUE JERSEY CITY, NJ





meet the neighborhood





neighboring universities





1 JOURNAL SQUARE
1,800 UNITS

JOURNAL SQUARED
1,800 UNITS

HOMESTEAD PLACE
800 UNITS

SINGH TOWER
209 UNITS

626 NEWARK AVE.
509 UNITS

HUDSON COUNTY
COURT HOUSE

URBY
317 UNITS

510 SUMMIT
AVE.

491 SUMMIT AVE.
605 UNITS

425 SUMMIT AVE
500 UNITS

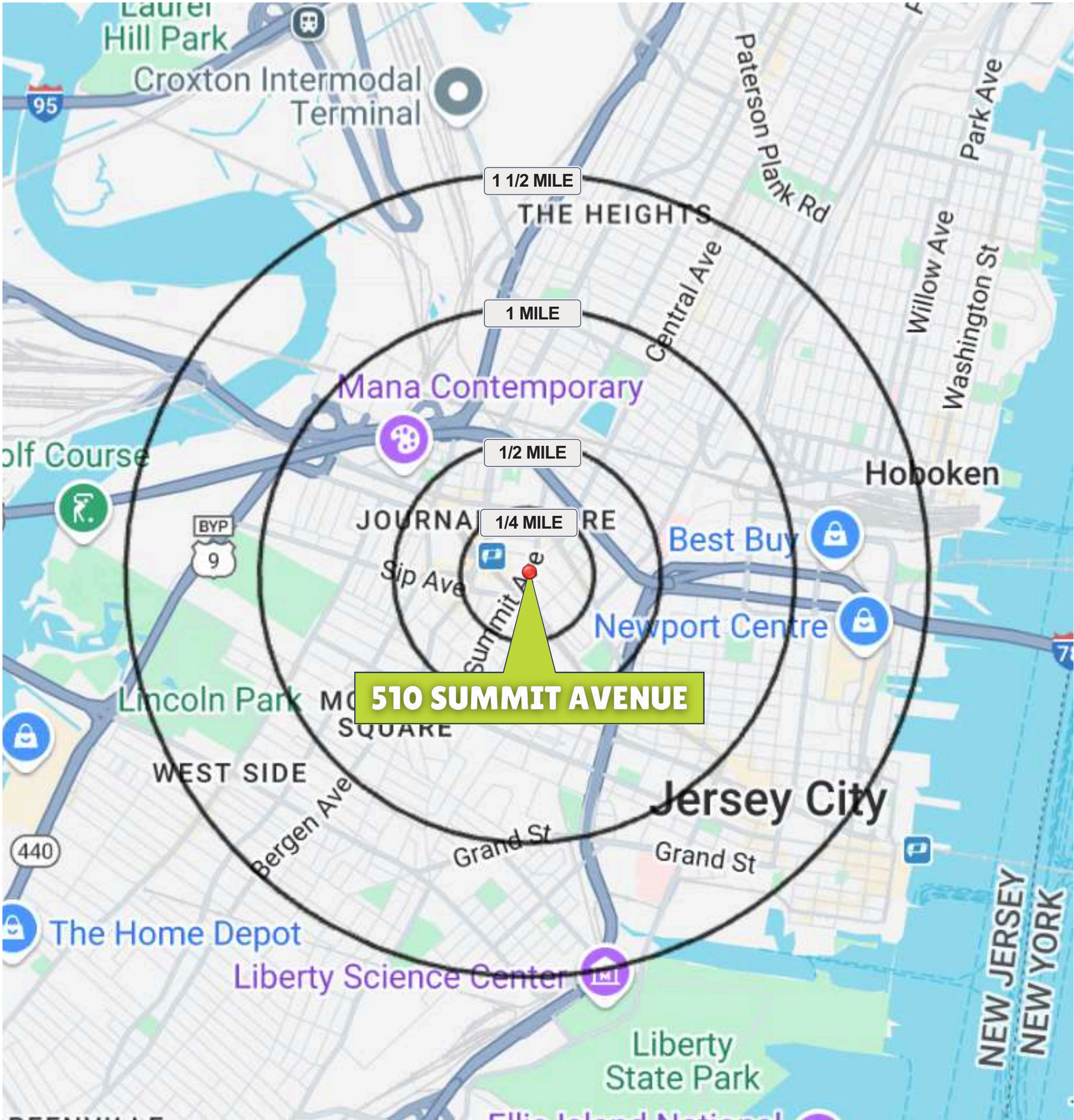
3 JOURNAL SQUARED
240 UNITS

500 SUMMIT AVENUE
900 UNITS APPROVED

HILLTOP
NEIGHBORHOOD



AREA DEMOGRAPHICS



ESTIMATED DAYTIME POPULATION		MEDIAN AGE	
1/4 mile	7,703	1/4 mile	34.5
1/2 mile	27,463	1/2 mile	35.0
1 mile	68,773	1 mile	34.8
1 1/2 mile	134,234	1 1/2 mile	34.3
TOTAL POPULATION		AVERAGE HOUSEHOLD EXPENDITURE ON FOOD AT RESTAURANTS	
1/4 mile	5,787	1/4 mile	\$2,385
1/2 mile	26,339	1/2 mile	\$2,541
1 mile	79,450	1 mile	\$2,659
1 1/2 mile	152,117	1 1/2 mile	\$3,073
AVERAGE HOUSEHOLD INCOME			
1/4 mile	\$59,880		
1/2 mile	\$64,409		
1 mile	\$67,278		
1 1/2 mile	\$77,485		

2023 numbers