



372 9TH STREET 255 BRUNSWICK STREET

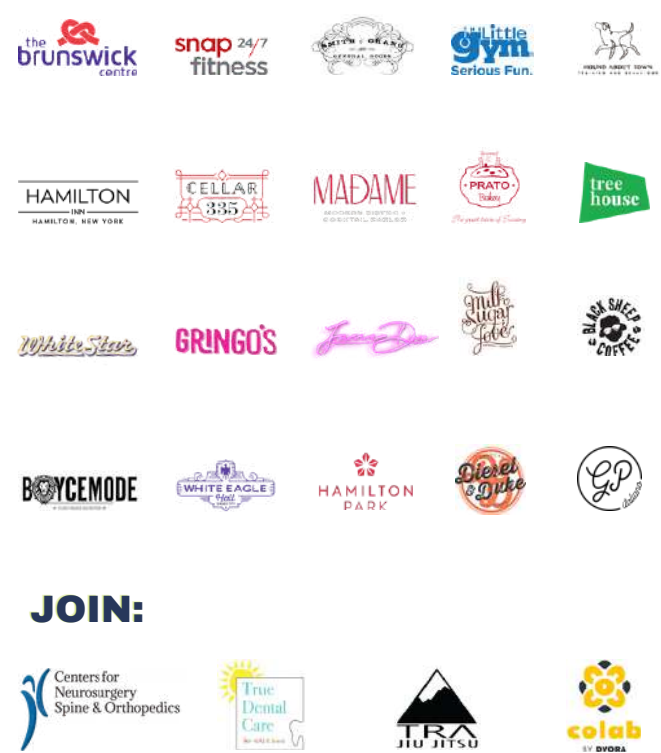


255 Brunswick Street - Hamilton House

HIGHLIGHTS:

- 255 Brunswick Street & 372 9th Street are two new boutique rental developments in Downtown Jersey City. Both are modern, luxurious and ideally situated steps off Hamilton Park & Enos Jones Park.
- 2 residential mixed-use buildings: 75 residential rental units in 255 Brunswick Street and 66 residential rental units in 372 9th Street. Both buildings have ground floor retail.
- Great location for grocer, creative hub, restaurant, fast casual food operator or fitness/medical use.
- Surrounded by a hundreds of new residential units.
- Walking distance to Newark Ave and all forms of mass transportation.

NEIGHBORING RETAIL:



SPACE AVAILABLE:

- 372 9th Street**
- **SPACE D:** 2, 717 SF (DIVISIBLE: 632 SF)
 - **SPACE A:** 2,861 SF
- 255 Brunswick Street**
- **Unit 2:** 12,022 SF (Previous Daycare)

FRONTAGE:

- 372 9th Street**
- 100 Feet of Frontage
- 255 Brunswick Street**
- 100 Feet of Frontage

ASKING RENT:

- 372 9th Street**
- \$35.00 PSF MG
- 255 Brunswick Street**
- \$40.00 PSF MG (Turnkey Daycare)

CEILING HEIGHT:

- 11 Feet

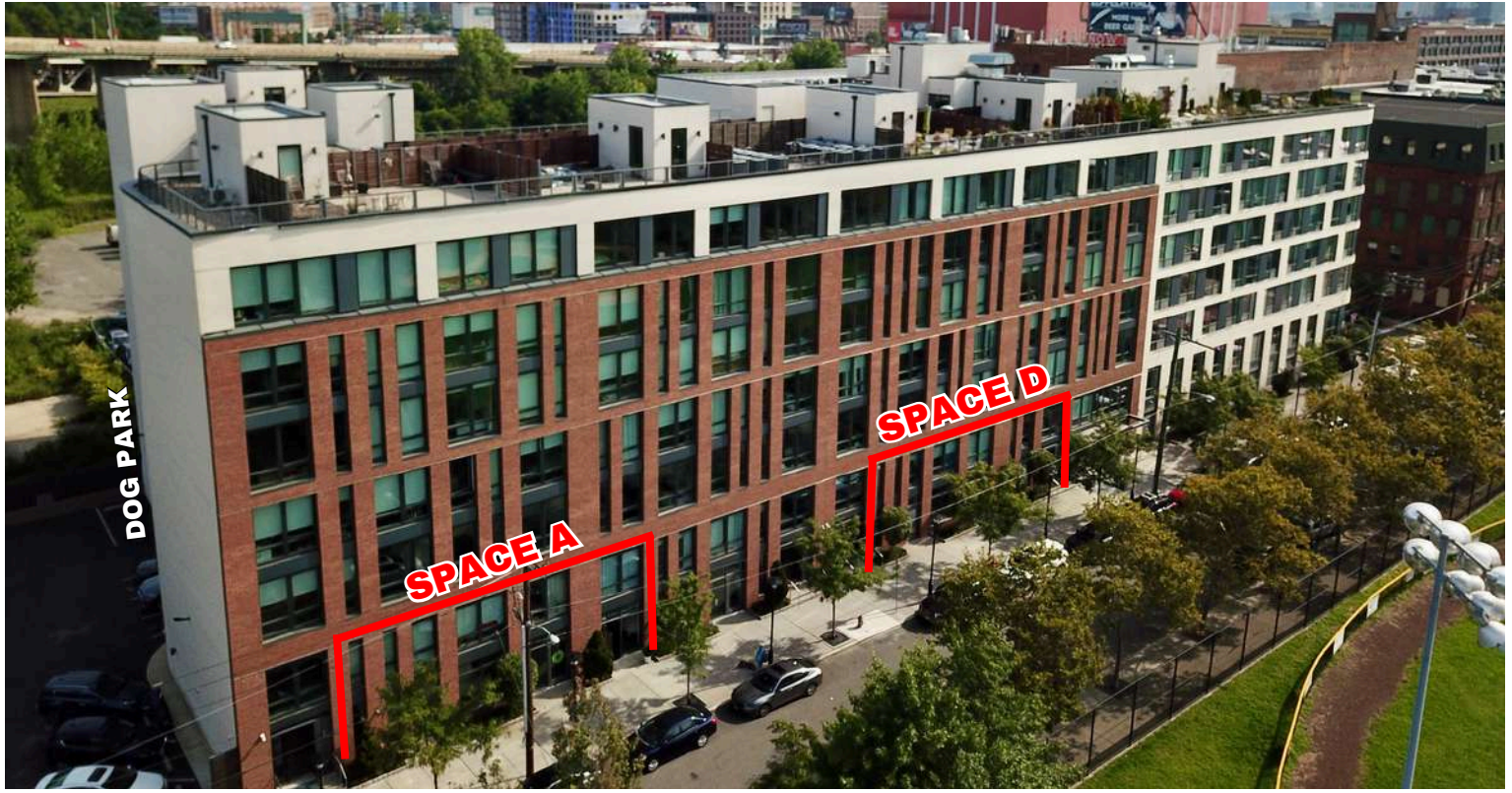
TERM:

- Negotiable

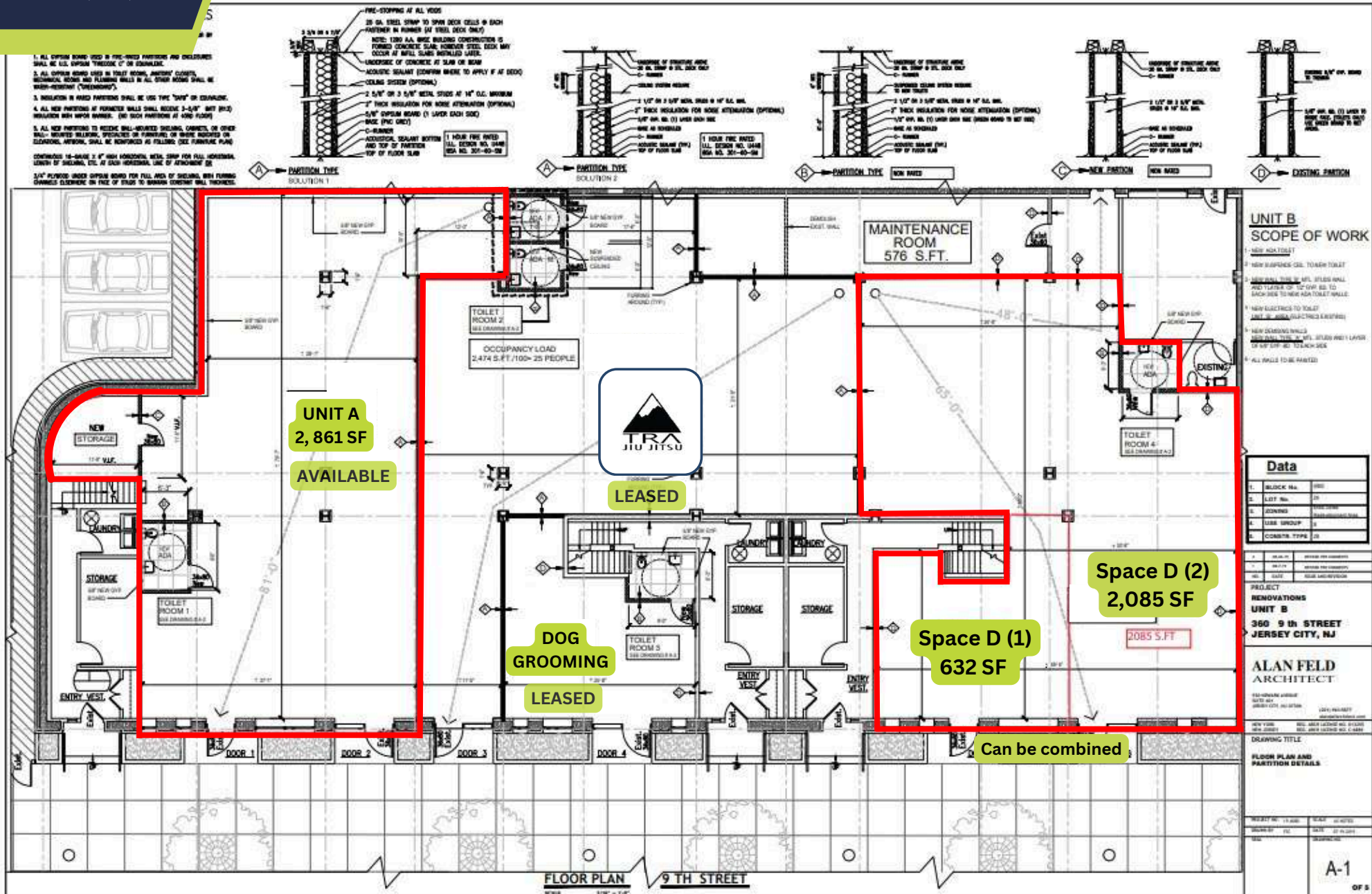
JOIN:



372 9TH STREET



372 9TH ST. UNIT A,B,D



255
BRUNSWICK
STREET



UNIT 2

UNIT 2 (INTERIOR IMAGES) - TURN KEY DAYCARE



AERIAL



AERIAL



THE HEIGHTS

THE ENCLAVE

EMERSON LOFTS

SOHO LOFTS

CAST IRON LOFTS

HOBOKEN

ENBANKMENT HOUSE

RIVENTMENT HOUSE

372 9TH STREET

255 BRUNSWICK STREET

ENOS JONES PARK