

HOMESTEAD PLACE

cmpnd



RETAIL & CAFE SPACE AVAILABLE

**WELCOME TO HOMESTEAD PLACE!
PRIME JOURNAL SQUARE LOCATION**

**618 Pavonia Ave
26-28 Van Reipen Ave**





26 - 28 VAN REIPEN AVE

Jersey City, 07306

HIGHLIGHTS:

- Cafe Space on the ground floor of new 27-story, 235-unit residential development.
- 2-minute walk to the Journal SQ Path Station.
- Floor-to-ceiling glass frontage on both Homestead Place and Van Reipen Avenue.
- Outdoor seating is available along the Homestead Pedestrian Plaza.
- Delivery Spring 2023
- Neighboring tenants Starbucks | Duane Reade | Wendy's | McDonalds | T-Mobile.

LOCATION:

Journal Square Neighborhood
 Located between Van Reipen Ave and Cottage St.
 1 Block from Journal Square PATH

SIZE:

+/- 730 SF

DELIVERY:

Turn-key Cafe

TERM:

Negotiable

FRONTAGE:

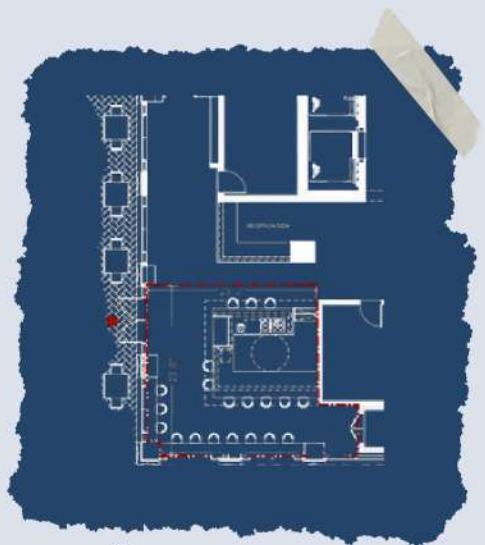
50 Ft on Homestead Place
 25 Ft on Van Reipen Avenue

ASKING RENT:

Upon Request

FLOOR PLAN:

Turn-key Cafe



VAN REIPEN AVE



MORE INFORMATION



BOBBY ANTONICELLO JR.
 bobby@gridrealestate.biz
 (201) - 300 - 6489

DANIEL DEL CID
 daniel@gridrealestate.biz
 (201) - 466 - 7320



www.gridrealestate.biz

201 Marin Blvd., Unit 106, Jersey City, New Jersey, 07302



618 PAVONIA AVE

Jersey City, 07306

HIGHLIGHTS:

- Two Retail Spaces available on the ground floor of new 27-story, 376-unit residential development.
- 1-minute walk to the Journal SQ Path Station.
- Floor-to-ceiling glass frontage with Accordion style doors on Homestead Place
- Outdoor seating is available along the Homestead Pedestrian Plaza.
- Delivery Spring 2023
- Incredible opportunity to be a part of this +/- 4,500 unit residential development.



LOCATION:

Journal Square Neighborhood
 Located between Pavonia Ave and Van Reipen Ave
 Directly Across the street from the Journal Square Path

SIZE:

SPACE 1: +/- 2,163 SF
 SPACE 2: +/- 2,128 SF

DELIVERY:

Vanilla Box

TERM:

Negotiable

ASKING RENT:

Upon Request

FRONTAGE:

SPACE 1: 25 Ft on Pavonia Avenue, 50 FT on Homestead Place
 SPACE 2: 70 Ft on Homestead Place

NEIGHBORING TENANTS:



MORE INFORMATION



BOBBY ANTONICELLO JR.
 bobby@gridrealestate.biz
 (201) - 300 - 6489

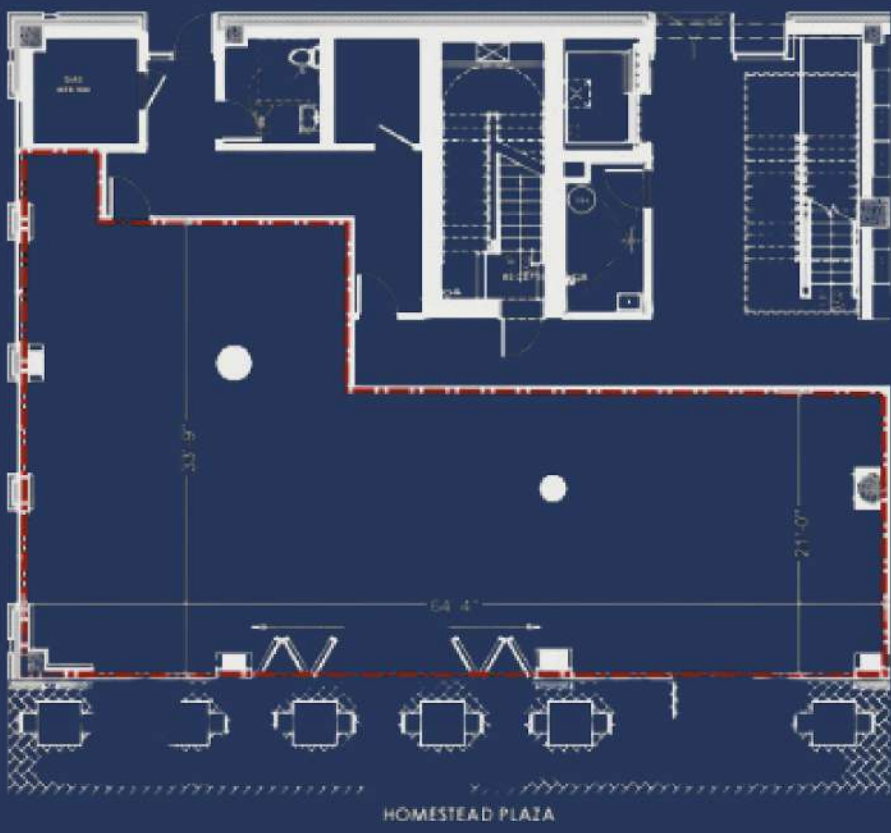
DANIEL DEL CID
 daniel@gridrealestate.biz
 (201) - 466 - 7320



www.gridrealestate.biz
 201 Marin Blvd., Unit 106,
 Jersey City, New Jersey, 07302

FLOOR PLAN

618 PAVONIA AVENUE



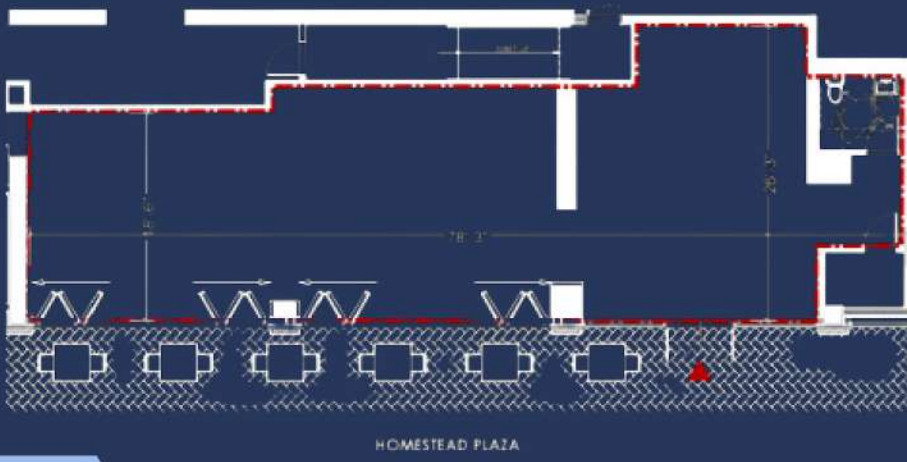
618 PAVONIA AVENUE (SPACE 1)

ADDRESS: 618 Pavonia Avenue, Jersey City, NJ 07306
 TRANSPORTATION: 1min walk from Journal SQ Path Station

PROPOSED USES: Market / Deli with light cooking
 HIGHLIGHTS: Indoor / Outdoor Seating on Homestead Plaza

FLOOR PLAN

5 HOMESTEAD PLACE AKA "618 PAVONIA AVE"



5 HOMESTEAD PLACE (SPACE 2)

ADDRESS: 618 Pavonia Avenue, Jersey City, NJ 07306
 TRANSPORTATION: 3min walk from Journal SQ Path Station

PROPOSED USES: Beauty Salon / Barber Shop / Dry Goods Store, Liquor Store
 HIGHLIGHTS: Outdoor Seating on Homestead Plaza



MORE INFORMATION

BOBBY ANTONICELLO JR.
 bobby@gridrealestate.biz
 (201) - 300 - 6489

DANIEL DEL CID
 daniel@gridrealestate.biz
 (201) - 466 - 7320

www.gridrealestate.biz
 201 Marin Blvd., Unit 106,
 Jersey City, New Jersey, 07302

JOURNAL SQUARE ARIEL



HOMESTEAD PLACE MASTER PLAN



**MORE
INFORMATION**



BOBBY ANTONICELLO JR.
bobby@gridrealestate.biz
(201) - 300 - 6489

DANIEL DEL CID
daniel@gridrealestate.biz
(201) - 466 - 7320



www.gridrealestate.biz
201 Marin Blvd., Unit 106,
Jersey City, New Jersey, 07302