



## HIGHLIGHTS

- Small space in the heart of the Northern Hoboken Retail Market.
- High-visibility retail leasing opportunity located on Washington Street – adjacent to Stevens Institute of Technology, Sinatra Drive, and The W Hotel.
- Located in the heart of downtown Hoboken, with a living population of 60,000 residents and a median age of 34, ranking it one of the most populous cities in New Jersey.
- High barrier-to-entry real estate market.
- Ideal for retail, food, service, apparel, wellness, medical.
- Neighboring Tenants: The Madison Bar & Grill, Apulia, Shokudo, Dino & Harry's Steakhouse, Soho Nails, Stingray Lounge, M & P Biancamano, Alfafa, Augustino's.

### Location

- On Washington Street
- Between 12<sup>th</sup> and 13<sup>th</sup> Street

### Walk Score

- Walker's Paradise (99)

### Size

- +/- 900 SF

### Ceiling Height

- 9 FT

### Frontage

- 12 FT on Washington Street

### Term

- Negotiable

### Lease Type

- Gross

### Asking Rent

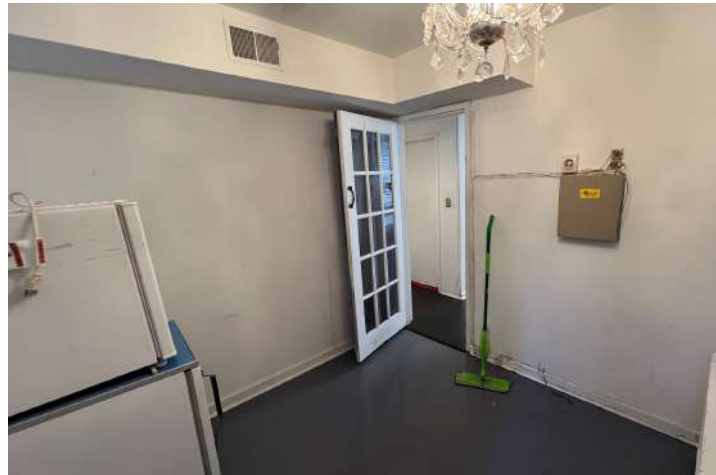
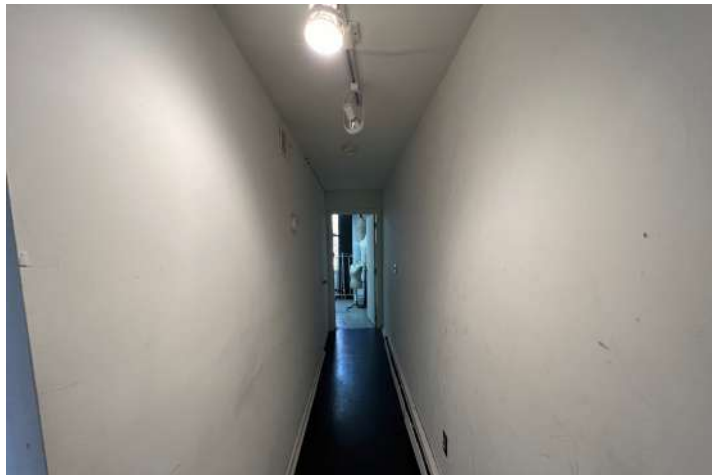
- Upon Request

Retail for Lease - Contact  
Bobby Antonicello Jr. Ph. 201.300.6489  
Bobby@gridrealestate.biz

PRIME STREET FRONT RETAIL  
LOCATED IN THE HEART OF WASHINGTON ST

1224 Washington St  
Hoboken, 07030

## Interior Photos



Retail for Lease - Contact  
Bobby Antonicello Jr. Ph. 201.300.6489  
Bobby@gridrealestate.biz

