

PRIME RETAIL SPACE AVAILABLE
LOCATED IN THE HEART OF HOBOKEN

1200 Washington St
Hoboken, 07030



HIGHLIGHTS

- Small space in the heart of the Northern Hoboken Retail Market.
- High-visibility retail leasing opportunity located steps off Washington Street – adjacent to Stevens Institute of Technology, Sinatra Drive, and The W Hotel.
- Located in the heart of downtown Hoboken, with a living population of 60,000 residents and a median age of 34, ranking it one of the most populous cities in New Jersey.
- High barrier-to-entry real estate market.
- Ideal for retail, food, service, apparel, wellness, medical.
- Neighboring Tenants: The Madison Bar & Grill, Apulia, Shokudo, Dino & Harry's Steakhouse, Soho Nails, Stingray Lounge, M & P Biancamano, Alfafa, Augustino's.

Location

- Steps off Washington Street
- On 12th Street

Walk Score

- Walker's Paradise (99)

Size

- +/- 500 SF

Ceiling Height

- 9 FT

Frontage

- 12 FT on 12th Street

Term

- Negotiable

Lease Type

- Gross

Asking Rent

- Upon Request

Retail for Lease - Contact
Bobby Antonicello Jr. Ph. 201.300.6489
Bobby@gridrealestate.biz

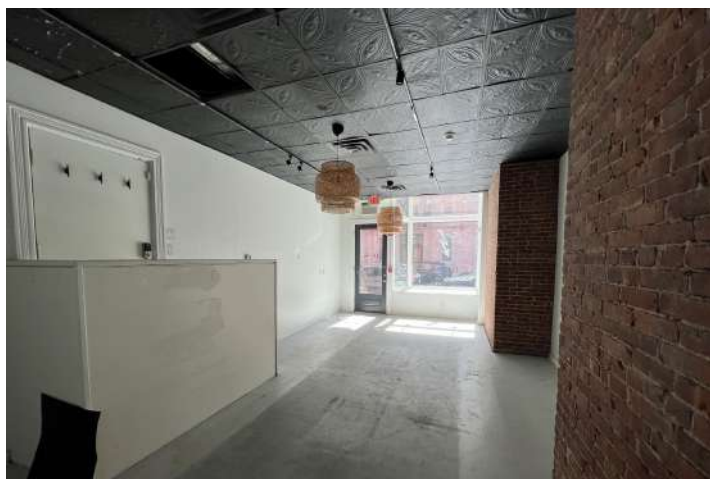
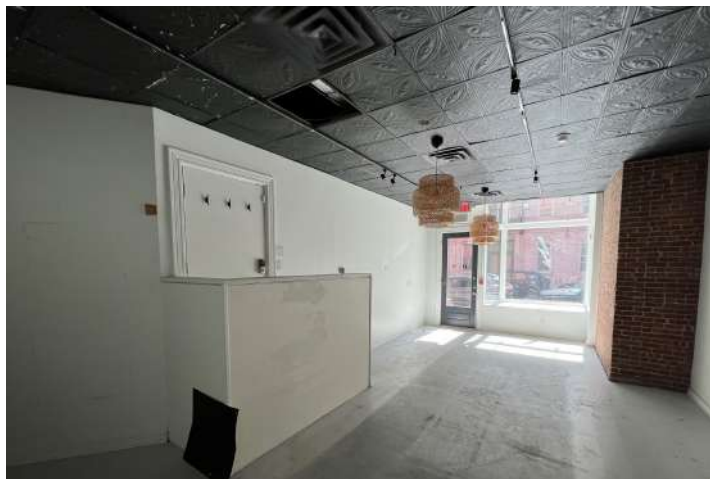
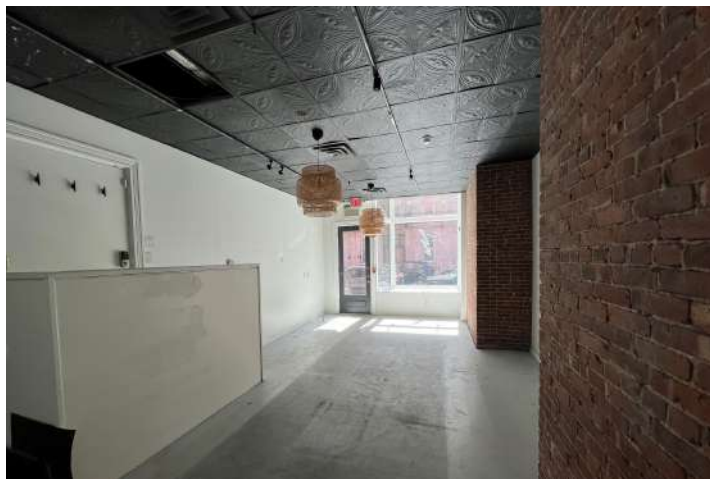
Retail for Lease - Contact
Daniel Del Cid Ph. 201.466.7320
daniel@gridrealestate.biz



PRIME RETAIL SPACE AVAILABLE
LOCATED IN THE HEART OF HOBOKEN

1200 Washington St
Hoboken, 07030

Interior Photos



Retail for Lease - Contact
Bobby Antonicello Jr. Ph. 201.300.6489
Bobby@gridrealestate.biz

Retail for Lease - Contact
Daniel Del Cid Ph. 201.466.7320
daniel@gridrealestate.biz

