



HIGHLIGHTS

- High-visibility retail leasing opportunity located on Washington Street – adjacent to Stevens Institute of Technology, Sinatra Drive, and The W Hotel.
- Located on Hoboken’s main thoroughfare (+/- 11,000 VPD).
- Fully renovated retail space with renovated basement.
- High barrier-to-entry real estate market.
- Thousands of apartments and condos in the immediate area.
- Short walk to Hoboken Path Station and across from public transportation.

- Neighboring Tenants: Planet Fitness, Dunkin Donuts, Anthropologie, 7-Eleven, Ben & Jerry’s, QDOBA, Sephora, Lululemon, Starbucks, McDonalds, Athletica, Panera, Bareburger, Chipotle, Mamoun’s Falafel.

Location

- Between 6th & 7th street.
- Between O’Bagel and Benny Tudino’s!
- 7 blocks from Hoboken PATH Station.

Walk Score

- Walker’s Paradise (99)

Term

- Negotiable

Lease Type

- Gross

Asking Rent

- Upon Request

Size

- +/- 1,300 SF
- Finished Basement

Ceiling Height

- +/- 12 FT

Frontage

- 16 Ft on Washington St

Retail for Lease - Contact
Bobby Antonicello Jr. Ph. 201.300.6489
Bobby@gridrealestate.biz

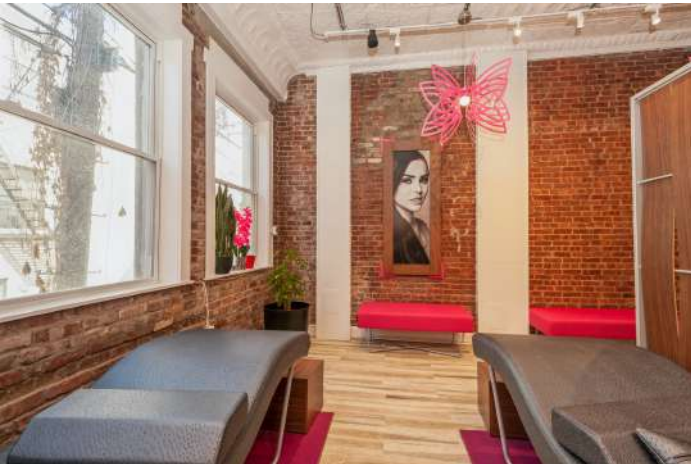
Retail for Lease - Contact
Daniel Del Cid Ph. 201.466.7320
Daniel@gridrealestate.biz



PRIME STREET FRONT RETAIL
LOCATED IN THE HEART OF WASHINGTON STREET

612 Washington St
Hoboken, NJ 07030

Interior Photos



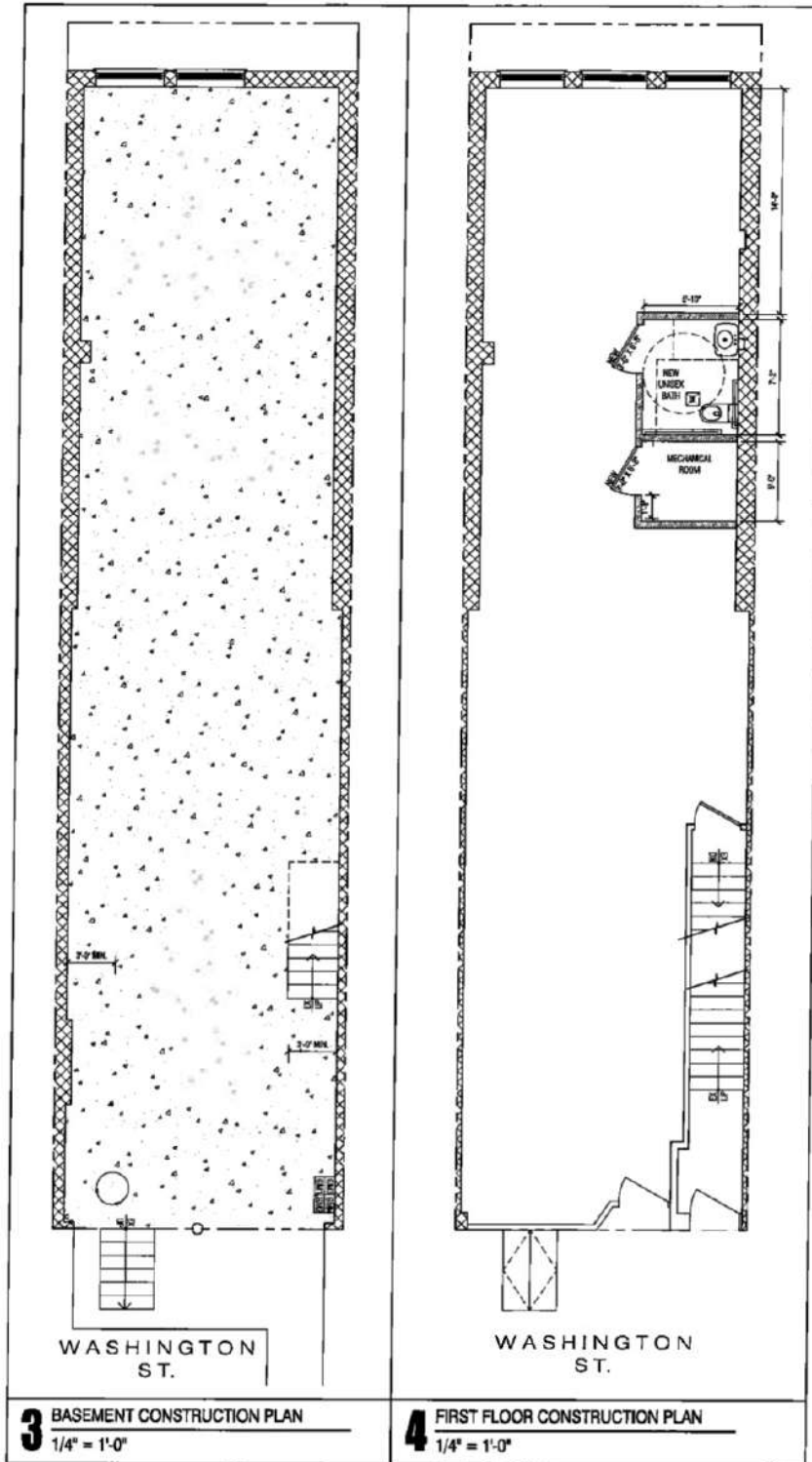
Retail for Lease - Contact
Bobby Antonicello Jr. Ph. 201.300.6489
Bobby@gridrealestate.biz

Retail for Lease - Contact
Daniel Del Cid Ph. 201.466.7320
Daniel@gridrealestate.biz



Floor Plan

EXHIBIT "A" - LEASE PREMISES



3 BASEMENT CONSTRUCTION PLAN
1/4" = 1'-0"

4 FIRST FLOOR CONSTRUCTION PLAN
1/4" = 1'-0"