

503 COMMUNIPAW AVENUE



503 COMMUNIPAW AVENUE

— Brand New Opportunity Coming to Communipaw's Retail Corridor

These 1,100SF and 900SF retail spaces will be delivered vanilla boxed at the base of a 40-unit luxury residential building. Sitting at the core of the Communipaw Ave retail corridor, and walking distance from Arlington Park, this opportunity is move in ready with venting for restaurants.

±900-2,00SF
GROUND FLOOR RETAIL

ASKING RENT
INQUIRE WITHIN

CEILING HEIGHTS
12'-15' CLEAR

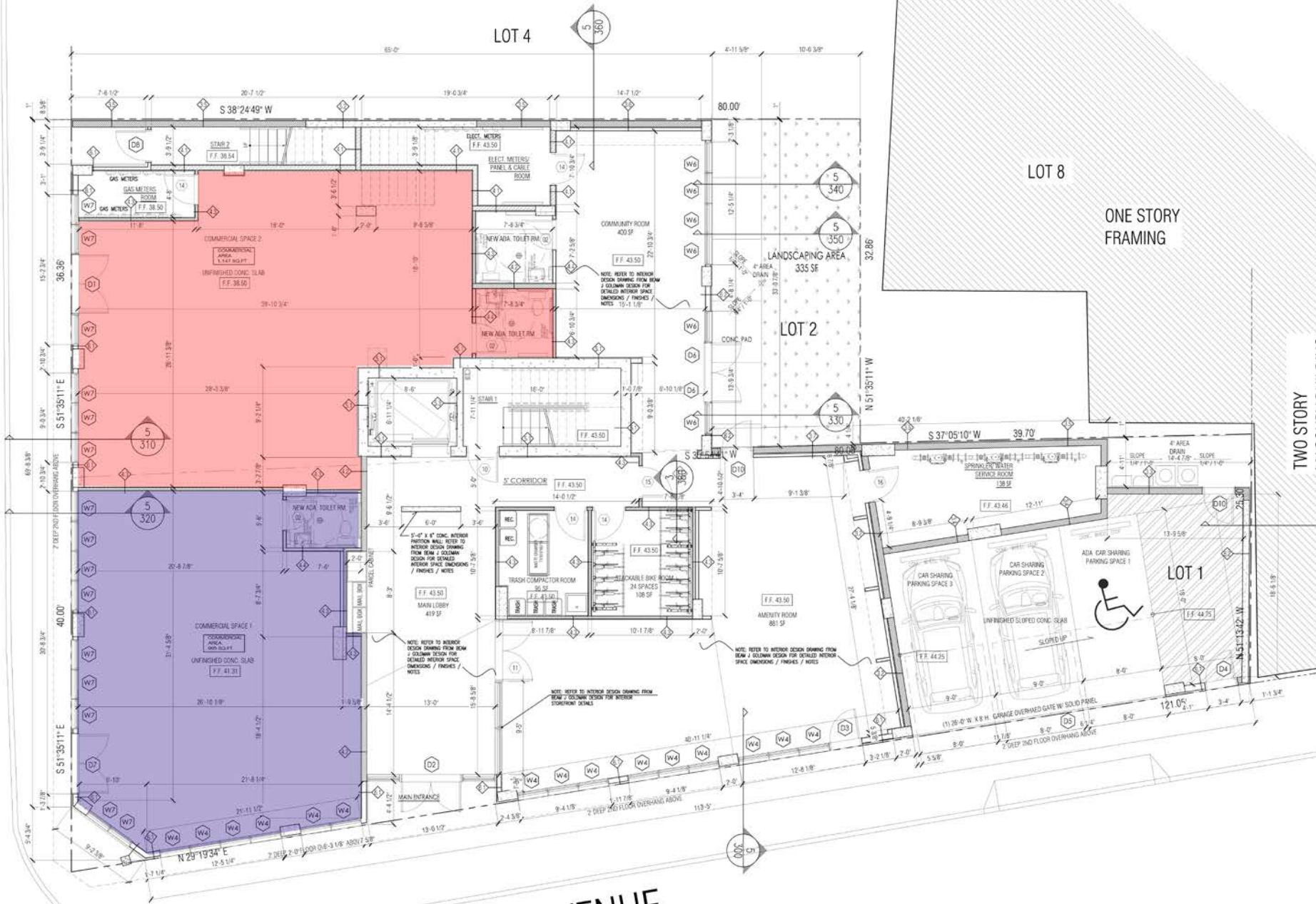
AVAILABLE IMMEDIATELY



COMMUNIPAW (60') AVENUE

BLOCK 18703

LOT 4



LOT 8

ONE STORY FRAMING

LOT 2

LOT 1

TWO STORY BUILDING

ARLINGTON (50') AVENUE